

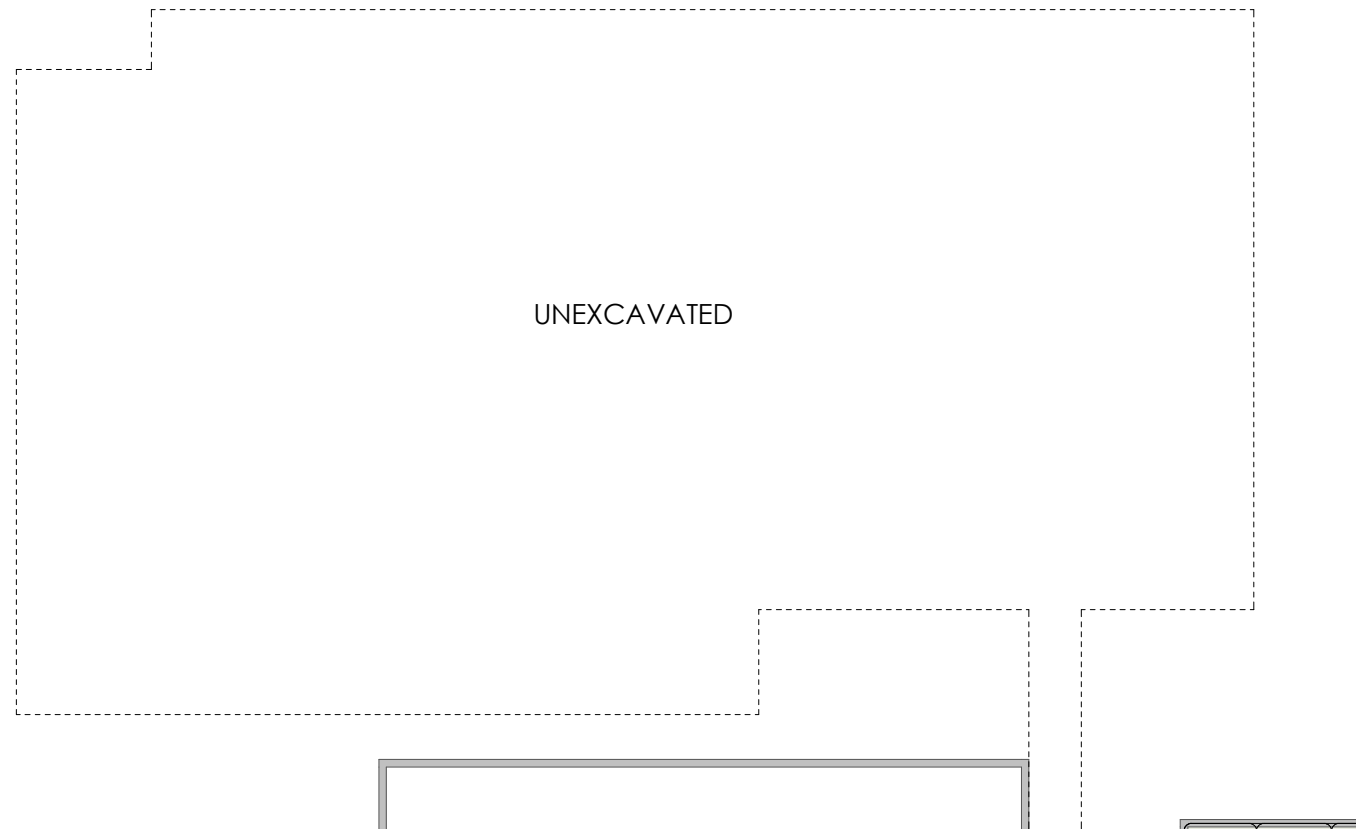


PROGRAM LEGEND














- | | | |
|---|--|--|
| CIRCULATION | CORRECTIONS | BUILDING SUPPORT |
| CORRECTIONS ADMIN | CORRECTIONS INTAKE | LAW ENFORCEMENT |
| COUNTY ATTORNEY | JUSTICE OF THE PEACE | STATE COURTS |
| COUNTY COURTS | CORRECTIONS SUPPORT | CORRECTIONS HOUSING |
| | FACILITIES | |

LIGHT RENOVATION AREA	4,632
HEAVY RENOVATION AREA	7,094
ADDITION AREA	2,036





PROGRAM LEGEND

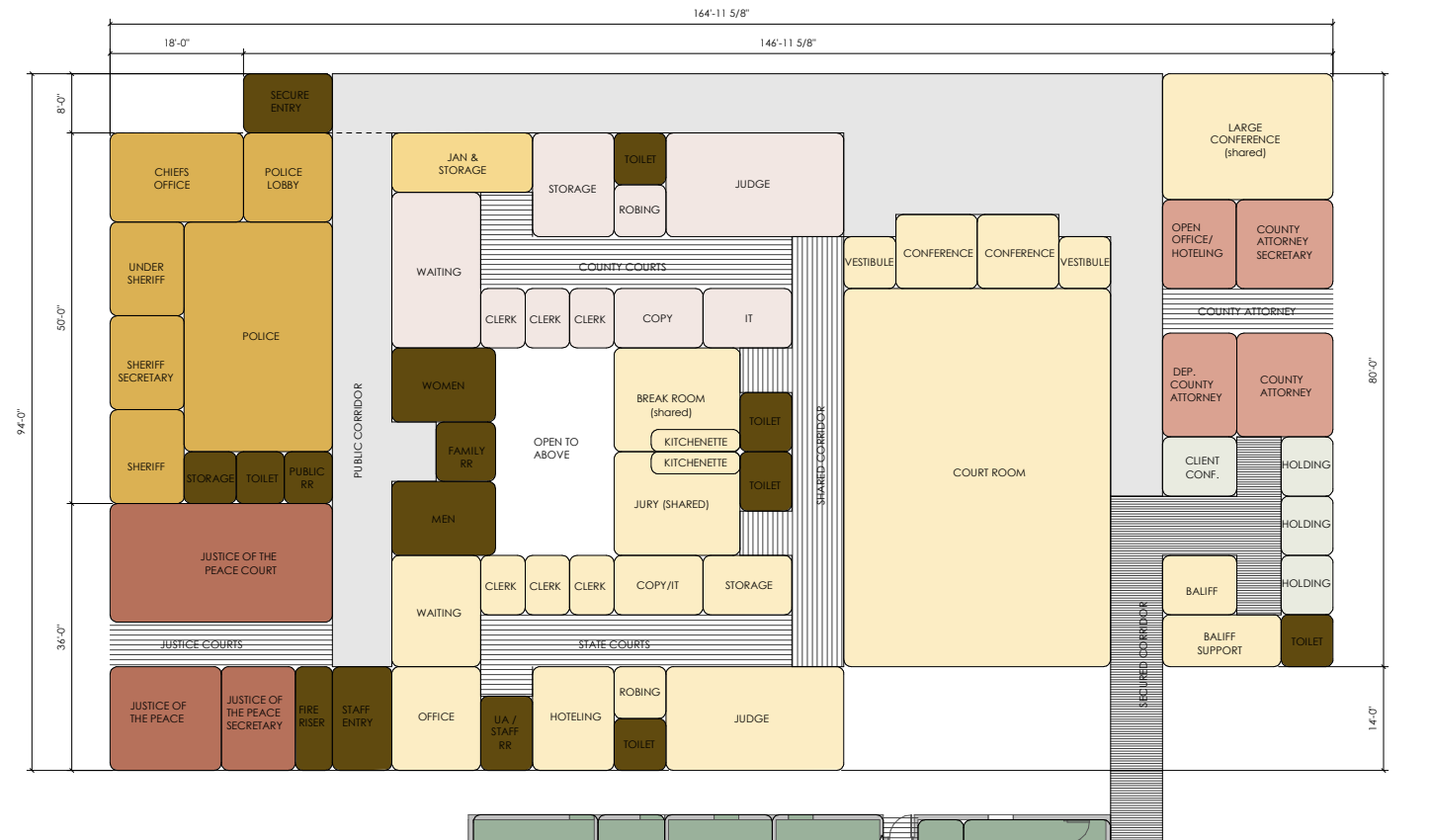
 CIRCULATION	 CORRECTIONS	 BUILDING SUPPORT
 CORRECTIONS ADMIN	 CORRECTIONS INTAKE	 LAW ENFORCEMENT
 COUNTY ATTORNEY	 JUSTICE OF THE PEACE	 STATE COURTS
 COUNTY COURTS	 CORRECTIONS SUPPORT	 CORRECTIONS HOUSING
	 FACILITIES	



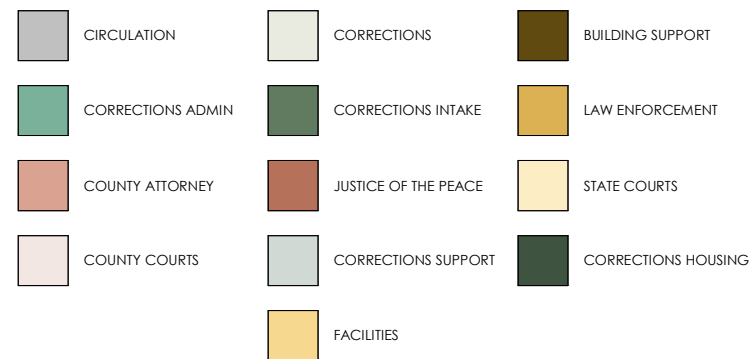


LIGHT RENOVATION AREA	10,701
HEAVY RENOVATION AREA	11,986
NEW BUILDING AREA	1,872



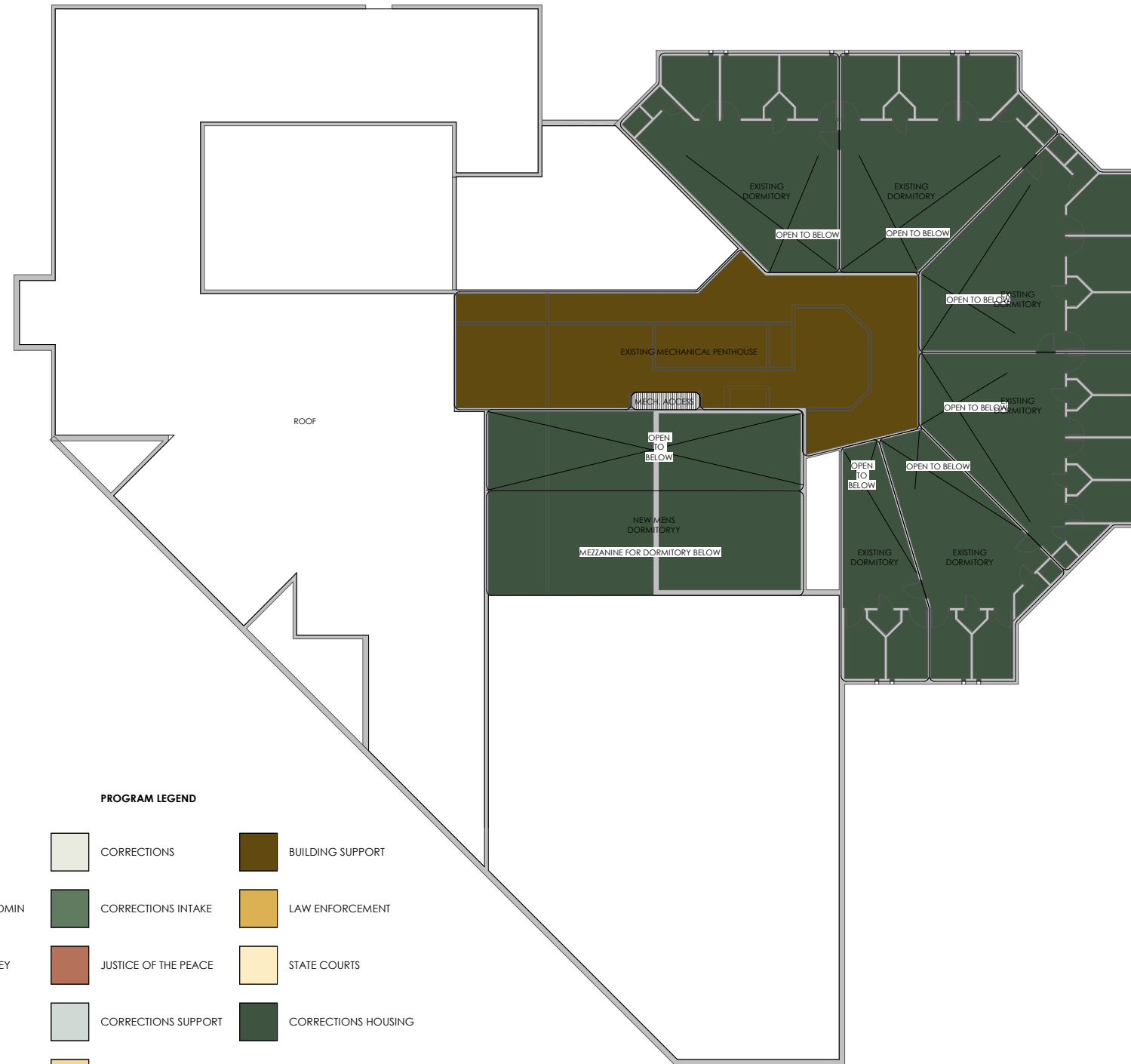


PROGRAM LEGEND



NEW BUILDING AREA

14,724



PROGRAM LEGEND

CIRCULATION	CORRECTIONS	BUILDING SUPPORT
CORRECTIONS ADMIN	CORRECTIONS INTAKE	LAW ENFORCEMENT
COUNTY ATTORNEY	JUSTICE OF THE PEACE	STATE COURTS
COUNTY COURTS	CORRECTIONS SUPPORT	CORRECTIONS HOUSING
	FACILITIES	

LIGHT RENOVATION AREA	7,540
HEAVY RENOVATION AREA	0
NEW BUILDING AREA	1,738

