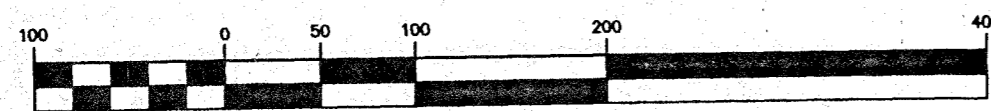




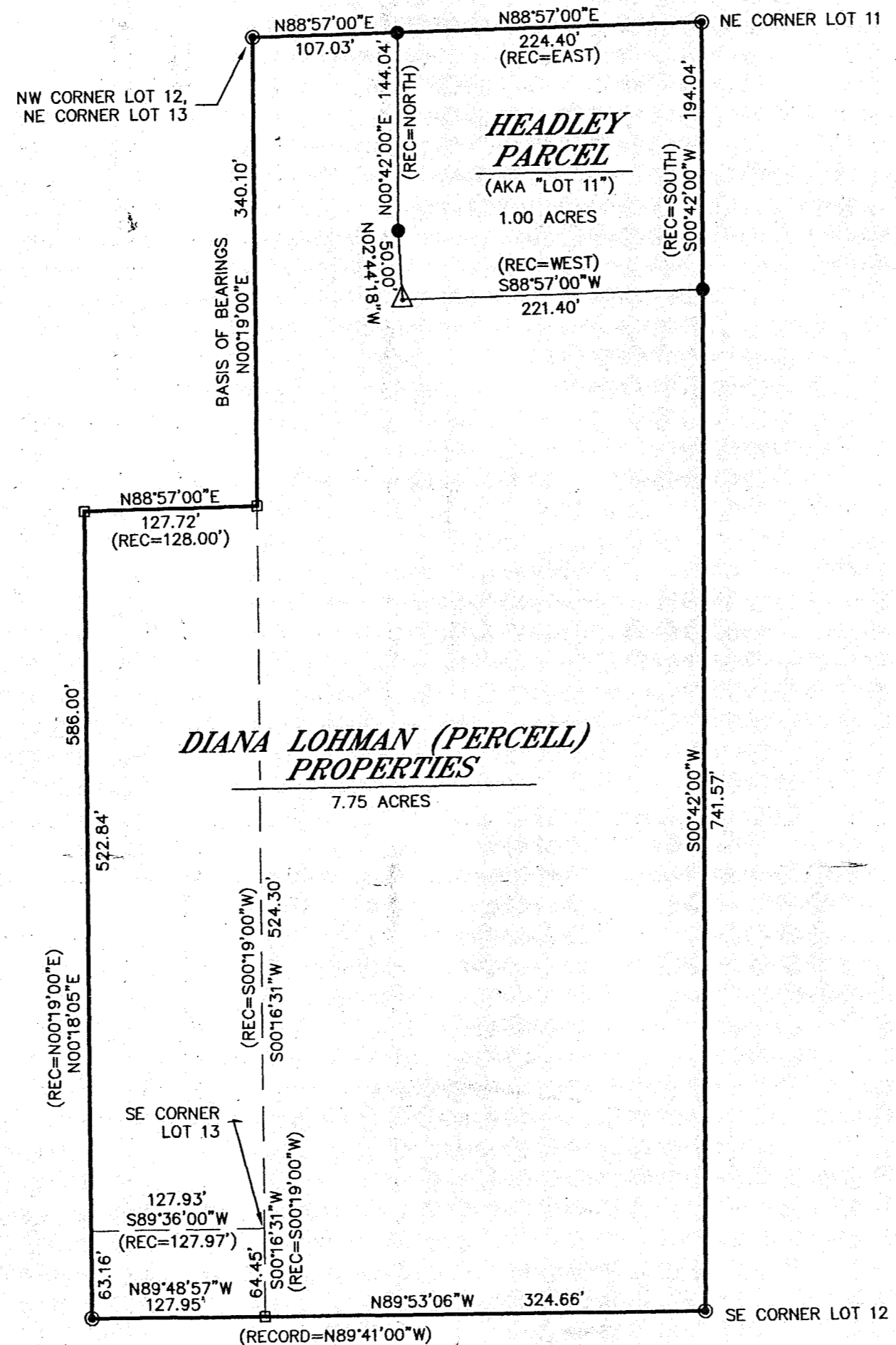
LEGEND

- SET 5/8" REBAR WITH PLASTIC CAP
- FOUND REBAR WITH CAP SET BY UTAH RLS#156785
- ⊙ FOUND REBAR WITH CAP SET BY UTAH RLS#155675
- △ SET P-K NAIL WITH WASHER IN CONCRETE SURFACE

GRAPHIC SCALE



(IN FEET)
1 inch = 100 ft.



SURVEYORS NARRATIVE

THE PURPOSE OF THIS SURVEY WAS TO MONUMENT THE BOUNDS OF THE LOHMAN (PERCELL) LANDS AND THE HEADLEY LANDS, ALL WITHIN LOTS 11, 12, 13 & 14 OF PLOT B OF THE BLUFF TOWNSITE. FURTHER, AN ADJUSTMENT OF THE RECORD LINES WAS MADE AT THE SW CORNER OF HEADLEY TO ACCOMMODATE IMPROVEMENTS PERTINENT TO THE LOHMAN PROPERTY. NEW LEGAL DESCRIPTIONS OF THE POST ADJUSTMENT LANDS ARE HEREON.
THESE BOUNDARIES, WITH THE EXCEPTION OF HEADLEYS SOUTH AND WEST BOUNDARIES, ARE DEPENDENT ON THE JOHNSTON AND PEHRSON SURVEYS OF RECORD. THIS SURVEY FOUND THOSE BOUNDARIES AND PERPETUATES THEM HEREON.
BEARINGS ARE BASED ON THE EAST LINE OF LOT 13-WEST LINE LOT 12 (BEARING FROM BOTH OF THE RECORD SURVEYS=N 00°19'00"E).

POST ADJUSTMENT LEGAL DESCRIPTIONS

HEADLEY

A DESCRIPTION OF THE HEADLEY PARCEL, ALSO KNOWN AS "LOT 11", WITHIN LOTS 11 & 12 PLOT B OF THE BLUFF TOWNSITE, SECTION 25, T 40 S, R 21 E, SLM, SAN JUAN COUNTY, UTAH, AND MORE PARTICULARLY DESCRIBED AS FOLLOWS:
BEGINNING AT THE NE CORNER OF LOT 11 PLOT B OF THE BLUFF TOWNSITE AND PROCEEDING THENCE S 00°42'00"W (RECORD= SOUTH) 194.04 FT. TO A CORNER, THENCE S 88°57'00"W (RECORD=WEST) 221.40 FT. TO A CORNER, THENCE N 02°44'18"W 50.00 FT. TO A CORNER, THENCE N 00°42'00"E (RECORD=NORTH) 144.04 FT. TO A CORNER, THENCE N 88°57'00"E (RECORD=EAST) 224.40 FT. TO THE POINT OF BEGINNING AND CONTAINING 1.00 ACRES, MORE OR LESS. CORNERS ARE MONUMENTED AS SPECIFIED ON THE ATTACHED PLAT.

DIANA LOHMAN (PERCELL)

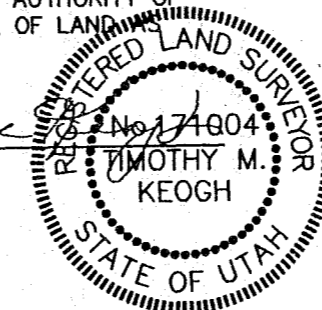
A DESCRIPTION OF THE LOHMAN (PERCELL) LANDS WITHIN LOTS 11, 12 & 13 PLOT B OF THE BLUFF TOWNSITE, SECTION 25, T 40 S, R 21 E, SLM, SAN JUAN COUNTY, UTAH, AND MORE PARTICULARLY DESCRIBED AS FOLLOWS:
BEGINNING AT THE NW CORNER OF LOT 12 PLOT B OF THE BLUFF TOWNSITE, AND PROCEEDING THENCE N 88°57'00"E 107.03' FT. TO A CORNER, THENCE S 00°42'00"W (RECORD= SOUTH) 144.04 FT. TO A CORNER, THENCE S 02°44'18"E 50.00 FT. TO A CORNER, THENCE N 88°57'00"E (RECORD=EAST) 221.40 FT. TO A CORNER, THENCE S 00°42'00"W 741.57 FT. TO THE SE CORNER OF LOT 12, THENCE N 89°53'06"W (RECORD=N 89°41'00"W) 324.66 FT. TO A CORNER, THENCE N 89°48'57"W 127.95 FT. TO A CORNER, THENCE N 00°18'05"E (RECORD=N 00°19'00"E) 586.00 FT. TO A CORNER, THENCE N 88°57'00"E 127.72 FT. (RECORD=128.00 FT.) TO A CORNER, THENCE N 00°19'00"E 340.10 FT. TO THE POINT OF BEGINNING AND CONTAINING 7.75 ACRES, MORE OR LESS. CORNERS ARE MONUMENTED AS SPECIFIED ON THE ATTACHED PLAT.

SURVEYORS CERTIFICATE

I, TIMOTHY M. KEOGH, DO HEREBY CERTIFY THAT I AM A REGISTERED UTAH LAND SURVEYOR, HOLDING CERTIFICATE NO. 171004 AS PRESCRIBED UNDER THE LAWS OF THE STATE OF UTAH, AND I FURTHER CERTIFY THAT UNDER AUTHORITY OF THE OWNER I HAVE SURVEYED THAT PARCEL OF LAND SHOWN AND DESCRIBED HEREON.

DATE 4-16-12

TIMOTHY M. KEOGH



KEOGH LAND SURVEYING
45 EAST CENTER STREET MOAB, UTAH, 84532

A BOUNDARY LINE ADJUSTMENT & SURVEY OF
THE LOHMAN (PERCELL) AND HEADLEY PROPERTIES
WITHIN THE BLUFF TOWNSITE, SECTION 25, T 40 S, R 21 E, SLM, SAN JUAN COUNTY, UTAH

PREPARED FOR
LOHMAN & HEADLEY

DATE: 4-16-12	DRAWN BY: TMK	CHECKED BY: TMK
SCALE: 1"=100'	F.B.# 153 TDC1	CADILLAC RANCH.DWG

891